

Daily Derivatives & Market Report

CONTENTS

Page No.	Particulars
2	Market Summary
3	Nifty Futures – Derivatives Snap
4	Bank Nifty Futures – Derivatives Snap
5	Activity in Nifty Options
6	What do Nifty Technical suggest
7	Derivative Analysis
8	Disclaimer

Index Trend Analysis

Pivot(Daily)	Close	S2	S1	Pivot	R1	R2	Daily	Weekly	Monthly
Nifty	10730	10458	10594	10671	10807	10884	Neutral	Neutral	Neutral
Sensex	35650	34757	35203	35457	35904	36158	Neutral	Neutral	Neutral
Nifty Futures	10756	10460	10608	10684	10832	10908	Neutral	Neutral	Neutral
Bank Nifty	26987	26187	26587	26808	27208	27429	Buy	Buy	Neutral
CNX IT	14159	13925	14042	14136	14253	14346	Sell	Neutral	Buy
CNX Midcap	17573	17087	17330	17471	17714	17855	Neutral	Neutral	Neutral
CNX Small Cap	6315	6148	6231	6277	6360	6405	Neutral	Neutral	Neutral

Market Summary

Domestic Indices	Close	Points	% Chg
SENSEX	35649.9	179.8	0.5
NIFTY	10729.9	66.4	0.6
MIDCAP	15169.7	-0.9	0.0
SMLCAP	14436.5	-29.9	-0.2
BSEFMC	11626.6	-13.1	-0.1
AUTO	20793.9	77.6	0.4
POWER	1965.6	-0.5	0.0
REALTY	1801.3	-8.3	-0.5
BSE IT	13860.7	-103.2	-0.7
BANKEKX	30111.4	186.5	0.6
OILGAS	13551.3	41.0	0.3
METAL	11610.0	34.2	0.3

Currency Futures	Close	Pre. Pts	% Chg
27-Dec-18 EUR-INR	79.75	80.02	-0.33
27-Dec-18 USD-INR	70.00	70.15	-0.21
27-Dec-18 GBP-INR	88.83	88.78	0.06
27-Dec-18 JPY-INR	63.35	63.22	0.22

Advance/ Decline	Adv	Dec	Un Ch.
NSE	746	1009	99
BSE	1066	1493	156

FII/DII Capital Mkt*	Buy	Sell	Net
FII	1790	1709	80
DII	2872	3010	(138)

*NOTE: - FII AND DII data figure is provisional

Market Commentary

Late hour recovery helped the Indian equity benchmarks to close the Wednesday's trading session in green, with Sensex and Nifty gaining more than 150 and 50 points, respectively. After a sluggish start, key indices remained weak for the most part of the session, impacted with former chief economic advisor Kaushik Basu's statement that distress in some sectors of the economy has slowed India's GDP growth, the consequences of which could be far reaching. Basu said distress has been very much visible in the agriculture sector as the condition of farmers is bad. Domestic sentiments also got hit with a private report stating that as India near 2019 general elections, populist steps by the government may exert pressure on India's fiscal scenario. It expected the general government debt at 70.1% of the GDP in FY19. Weakness in broader markets along with heavy sell-off in IT, Realty and Healthcare stocks also, kept the markets down. Sun Pharma Industries and Yes Bank also contributed to the losses during the trading session.

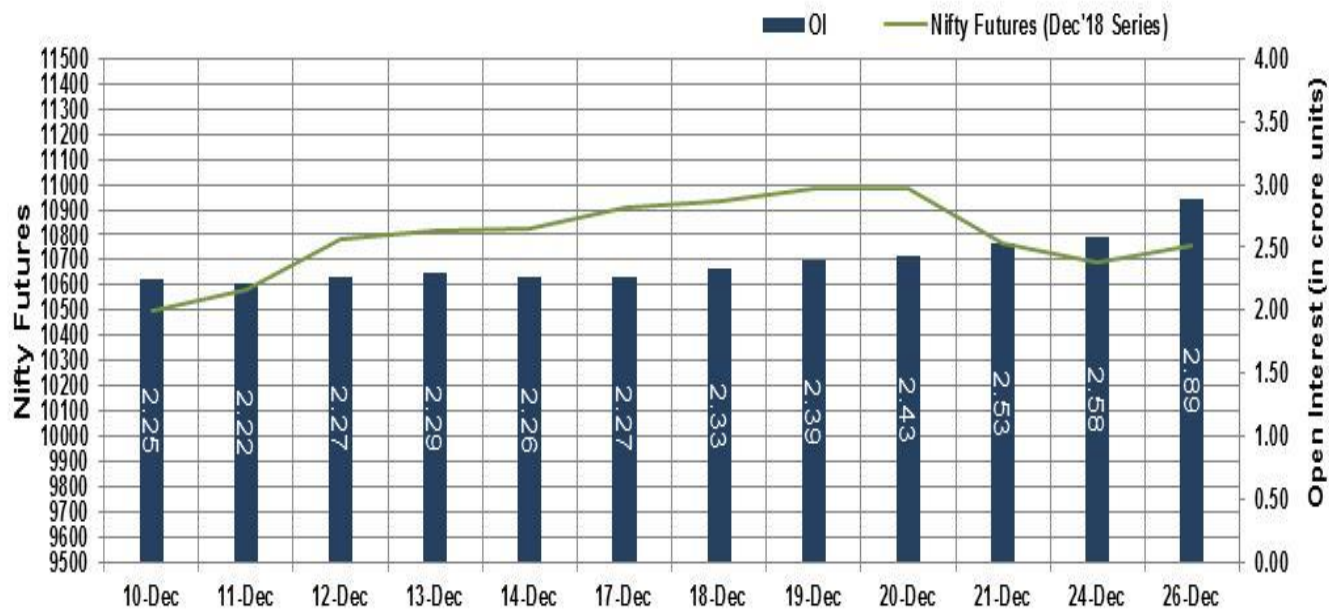
However, key indices recovered all of their losses in late noon deals to enter into positive territory, on account of last hour buying. The street got encouragement, after investments in the Indian capital market through participatory notes climbed to Rs 79,247 crore in November after hitting a nine-and-a-half year low at the end of preceding month. Some comfort also came with Finance Minister and GST Council Chairman Arun Jaitley raising hopes of further pruning the peak rate (28%) and merging the 12% and 18% slabs.

Market Turnover & FII Derivative Data

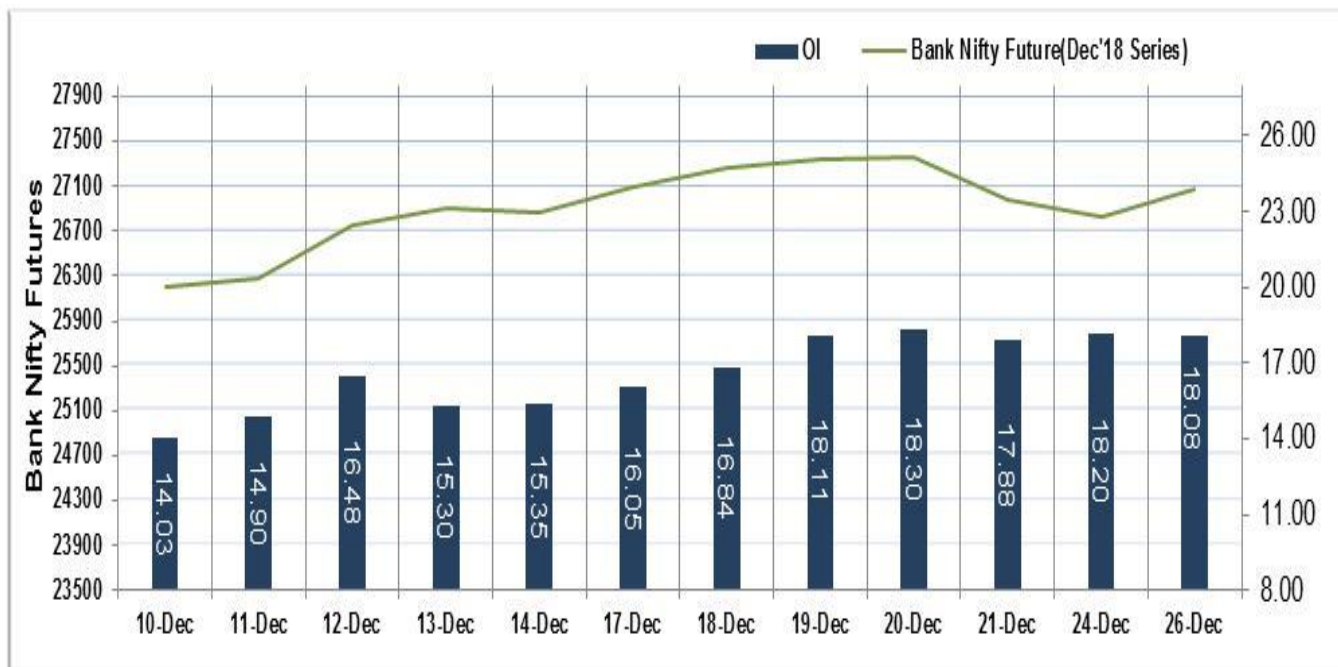
Market TO	Current	Previous	Net%
BSE CASH	2552	2073	23
NSE CASH	27416	24197	13
NSE FO	1522811	938436	62

FII Derivatives	Buy	Sell	Net
Ind. Futures	13922	14676	(755)
Ind. Options	151865	151949	(85)
Stk. Futures	32306	32578	(272)
Stk. Options	7072	7080	(8)

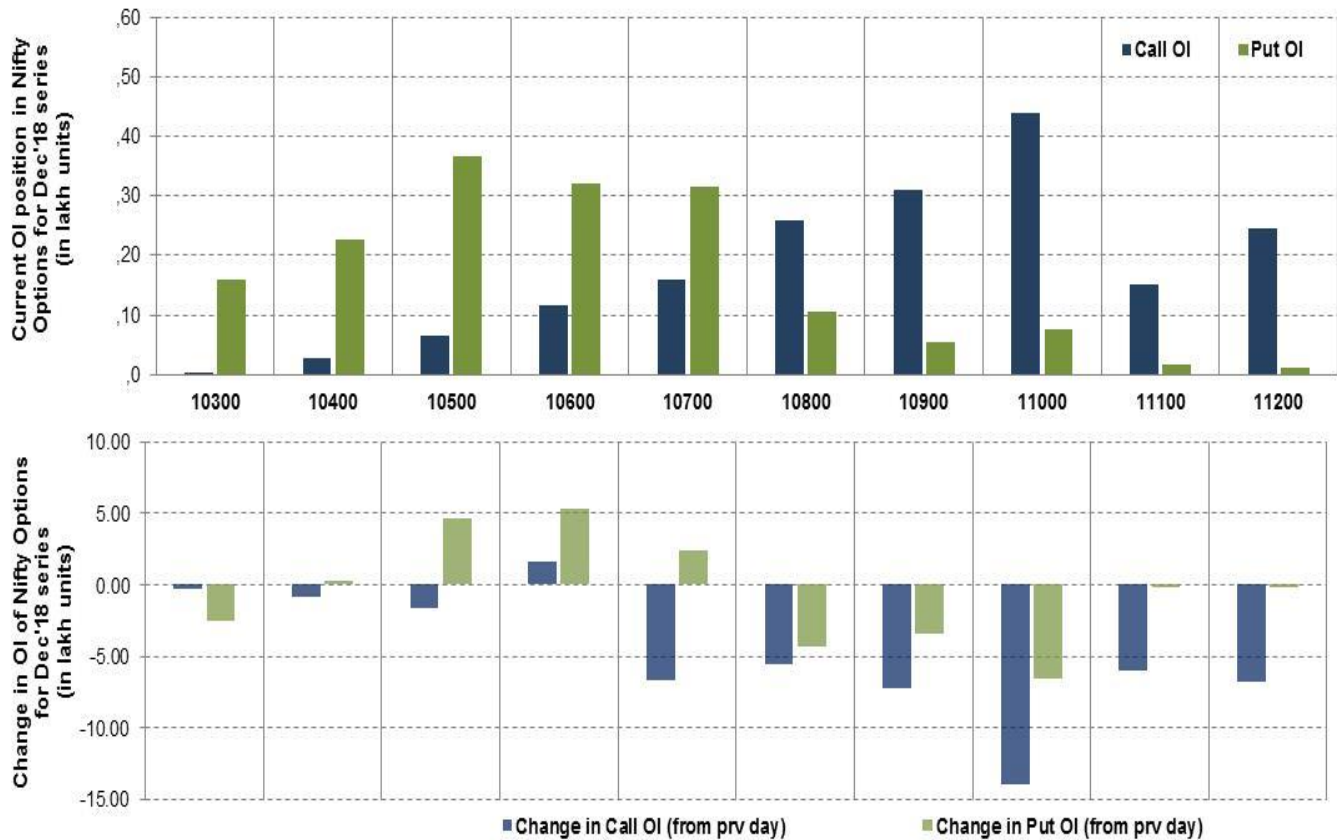
Nifty Futures



Bank Nifty Futures



Nifty Options



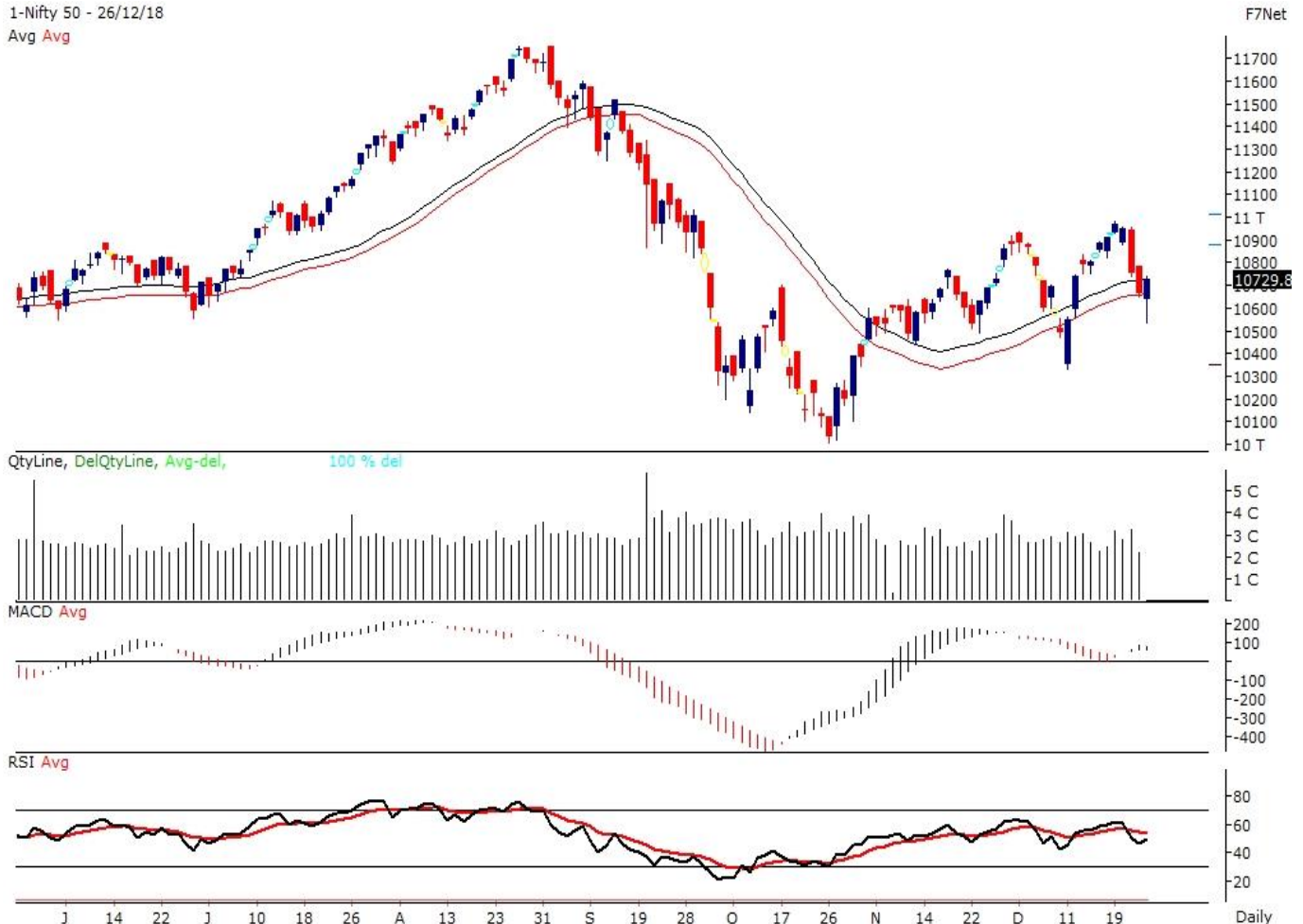
Note – Change in OI of Nifty Options refers to change from previous trading day
 Source-NSE, SIHL Derivatives Research (Institutional Equities)

- Among Nifty calls 11,000 SP from the Dec month expiry was the most active call with a reduction of 1.14 million in open interest.
- Among Nifty puts, 10,500 SP from the Dec month expiry was the most active put with an addition of 0.46 million open interests.
- The maximum OI outstanding for Calls was at 11,000 SP (4.40mn) and that for Puts was at 10,500 SP (3.67mn)

Nifty Technical & Indices Levels

1-Nifty 50 - 26/12/18

Avg Avg



Nifty Cash prices have settled at 10729.85 up by 0.62 percent from the previous close. On the upper side it has resistance of 10800 and 10850 levels, while lower side it has support of 10650 and 10600 levels. Intraday traders should be cautious and take position accordingly.

Fresh Longs ↑ Open Interest ↑ Price					
Script	Prev. OI	Cur. OI	% Chg. OI	LTP	Price % Chg
-	-	-	-	-	-
-	-	-	-	-	-
-	-	-	-	-	-
-	-	-	-	-	-
Short-Covering ↓ Open Interest ↑ Price					
Script	Prev. OI	Cur. OI	% Chg. OI	LTP	Price % Chg
PVR	454,400	163,200	-64.08	1550.70	0.42
GSFC	11,254,500	3,690,000	-67.21	109.45	1.06
AMBUJACEM	9840000	3140000	-68.09	220.80	3.32
KTKBANK	8626500	2736000	-68.28	109.90	1.34
Fresh Shorts ↑ Open Interest ↓ Price					
Script	Prev. OI	Cur. OI	% Chg. OI	LTP	Price % Chg
-	-	-	-	-	-
-	-	-	-	-	-
-	-	-	-	-	-
-	-	-	-	-	-
Long Unwinding ↓ Open Interest ↓ Price					
Script	Prev. OI	Cur. OI	% Chg. OI	LTP	Price % Chg
MCX	1,661,100	716,100	-56.89	710.15	-0.89
NESTLEIND	143,050	59,800	-58.20	10804.95	-1.30
KPIT	2,673,000	1,089,000	-59.26	216.50	-1.12
TECHM	7,356,000	2,488,800	-66.17	694.70	-0.39

Disclaimer:

The Information provided by SMS or in newsletter or in any document has been prepared by Shah Investor's Home Ltd (SIHL). The Information provided by SMS or in newsletter does not constitute an offer or solicitation for the purchase or sale of any financial instrument or as an official confirmation of any transaction. The information contained herein is from publicly available data or other sources believed to be reliable, but we do not represent that it is accurate or complete and it should not be relied on as such. SIHL or any of its affiliates/ group companies shall not be in any way responsible for any loss or damage that may arise to any person from any inadvertent error in the information contained in this report or SMS. This Information provided by SMS, reports or in newsletter is provided for assistance only and is not intended to be and must not alone be taken as the basis for an investment decision. The user assumes the entire risk of any use made of this information. Each recipient of this Information provided by SMS, report or in newsletter should make such investigation as it deems necessary to arrive at an independent evaluation of an investment in the securities of companies referred to in this information provided by SMS, report or in newsletter (including the merits and risks involved), and should consult his own advisors to determine the merits and risks of such investment. The investment discussed or views expressed may not be suitable for all investors. This information is strictly confidential and is being furnished to you solely for your information.

The information should not be reproduced or redistributed or passed on directly or indirectly in any form to any other person or published, copied, in whole or in part, for any purpose. The information provided by report or SMS is not directed or intended for distribution to, or use by, any person or entity who is a citizen or resident of or located in any locality, state, country or other jurisdiction, where such distribution, publication, availability or use would be contrary to law, regulation or which would subject SIHL and affiliates/ group companies to any registration or licensing requirements within such jurisdiction. The distribution of this Information provided by SMS or in newsletter in certain jurisdictions may be restricted by law, and persons in whose possession this Information provided by SMS or in newsletter comes, should inform themselves about and observe, any such restrictions. The information given or Information provided by SMS, report or in newsletter is as of the date of the issue date of report or the date on which SMS provided and there can be no assurance that future results or events will be consistent with this information. This information is subject to change without any prior notice. SIHL reserves the right to make modifications and alterations to this statement as may be required from time to time. However, SIHL is under no obligation to update or keep the information current.

Nevertheless, SIHL is committed to providing independent and transparent recommendation to its client and would be happy to provide any information in response to specific client queries. Neither SIHL nor any of its affiliates, group companies, directors, employees, agents or representatives shall be liable for any damages whether direct, indirect, special or consequential including lost revenue or lost profits that may arise from or in connection with the use of the information. Past performance is not necessarily a guide to future performance. The disclosures of interest statements incorporated in the Information provided by SMS, report or in newsletter are provided solely to enhance the transparency and should not be treated as endorsement of the views expressed in the report. The analyst for this report certifies that all of the views expressed in this report accurately reflect his or her personal views about the subject company or companies and its or their securities, and no part of his or her compensation was, is or will be, directly or indirectly related to specific recommendations or views expressed in this report.

About Us:

Shah Investor's Home Ltd (SIHL) is an ISO 9001:2008 Certified financial Services Company established in 1994 at Ahmadabad, Gujarat. Customer satisfaction is guaranteed through our diversified product portfolio, professional management and customer first attitude. SIHL was the first broking house in Gujarat with membership in National Securities Depository Ltd (NSDL) and was the first broking name providing services in NSE F&O in Ahmedabad. Today, SIHL ranks among the top most players in Gujarat in retail stock broking area with 45 branches, 350 franchisee across India and providing service to more than 1,25,000 clients.